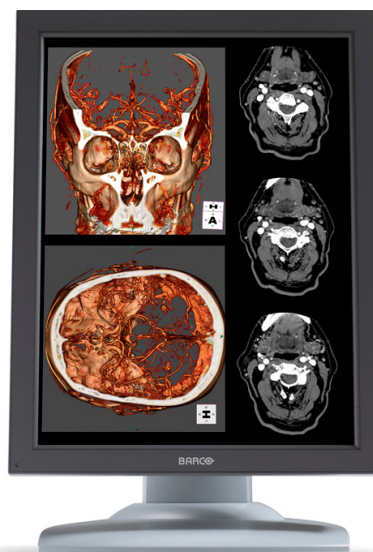


# Nio Color 2MP HB (MDNC-2121)

2 MegaPixel high-bright color display system



Nio Color 2MP HB is an industry-standard 2 MegaPixel color display system for dependable diagnostic viewing in high-bright color.

### Confident color reading

The Nio Color 2MP HB offers unrivalled color accuracy, smooth grayscales, a high contrast ratio and a wide viewing angle to ensure accurate multi-modality diagnostic imaging.

### Nio at a glance

- Dependable, proven technology > Long-term confidence at an exceptional value
- Complete product line > Optimized solutions for various modalities
- Perfect color matching between displays > Identical image quality on every screen
- Individual auto-calibration to DICOM > Worry-free deployment
- High-speed image rendering > Maximum productivity
- Uniformity correction > Compliance to regional QA standards
- 5-year warranty > Worry-free diagnostics for many years

BARCO

Visibly yours

# Technical specifications

<b>Screen technology</b>	TFT AM Color LCD IPS
<b>Active screen size (diagonal)</b>	541 mm (21.3")
<b>Active screen size (H x V)</b>	432 x 324 mm (17.0 x 12.8")
<b>Aspect ratio (H:V)</b>	4:3
<b>Resolution</b>	2MP (1600 x 1200)
<b>Pixel pitch</b>	0.2700 mm (0.01063")
<b>Color imaging</b>	Yes
<b>Gray imaging</b>	Yes
<b>Color support</b>	24 bit
<b>Viewing angle (H, V)</b>	176°
<b>Uniform Luminance Technology (ULT)</b>	Yes
<b>Per Pixel Uniformity (PPU)</b>	No
<b>Ambient Light Compensation (ALC)</b>	No
<b>Backlight Output Stabilization (BLOS)</b>	Yes
<b>I-Guard</b>	No
<b>Maximum luminance</b>	750 cd/m <sup>2</sup>
<b>DICOM calibrated luminance (ULT off)</b>	400 cd/m <sup>2</sup>
<b>Contrast ratio (ULT off)</b>	1050:1
<b>Response time (Tr + Tf)</b>	35 ms
<b>Video input signals</b>	DVI-D Single Link (1x), DisplayPort (1x)
<b>USB ports</b>	1 upstream (endpoint), 2 downstream
<b>USB standard</b>	2.0
<b>Power consumption (nominal)</b>	72W
<b>Power save mode</b>	Yes
<b>Dimensions with stand (W x H x D)</b>	Portrait: 382 x 530~589 x 250 mm Landscape: 488 x 480~540 x 250 mm
<b>Dimensions w/o stand (W x H x D)</b>	Portrait: 382 x 488 x 115 mm Landscape: 488 x 382 x 115 mm
<b>Net weight with stand</b>	14.0 kg
<b>Mounting standard</b>	VESA (100 mm)
<b>Screen protection</b>	Protective, non-reflective PMMA cover
<b>Recommended modalities</b>	CT, MR, US, DR, CR, NM, Film
<b>Certifications</b>	UL60601-1, CB60601-1, CSA C22.2 No 601.1, EN60601-1-2, EN55011 Limit B, ICES-001 B, EN61000-3-2/3, EN61000-4-2/3/4/5/6/8/11, VCCI, CE0120, KETI, CCC, BSMI, Demko, FCCB, FDA 510K, CMDCAS, MDD, WEEE, RoHS
<b>Supplied accessories</b>	Getting Started Guide Quick-Installation Sheet Video cables (1 x DVI Single Link, 1 x DisplayPort) Main cables (UK, European (CEBEC/KEMA), USA (UL/CSA; adaptor plug NEMA 5-15P), Chinese (CCC)) USB 2.0 cable External power supply
<b>Optional accessories</b>	NA
<b>QA software</b>	MediCal QAWeb
<b>Warranty</b>	5 years

Generated on: 19 Jun 2012  
 Technical specifications are subject to change without prior notice.  
 Please check [www.barco.com](http://www.barco.com) for the latest information.

**BARCO**

Visibly yours