

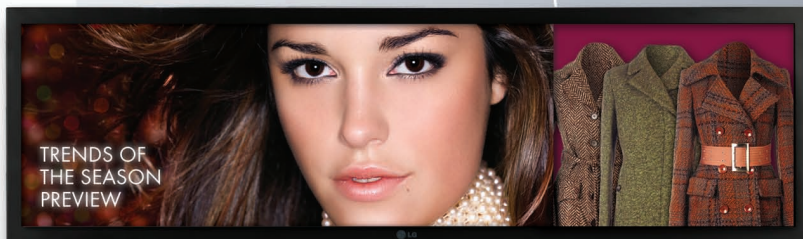


DIGISIGN

IPS Edge LED Full HD Capable Monitor

▶ **38WR50MS**

38" class (37.9" measured diagonally)



Features

TCO Total Cost of Ownership

The 38WR50MS is Energy Star® 5.1 compliant consuming approximately 40% less energy than non-compliant models. In standby mode, they use less than one watt of power and meet the environmental regulations such as EPA and Erp, while excluding the use of harmful materials (RoHS) and reducing CO2 emissions.

IPS In Plane Switching

Super IPS accurately display an image's quality and color at an 178° ultra wide viewing angle. There is no fall-off in color accuracy and no diversion in contrast ratio at wide angles. From bright sunlight to the most challenging lighting environments these displays are designed to reproduce and maintain the ultimate color temperature for lifelike images.

UNIQUE APPLICATION FOR SPACE SAVING

Allows to put the display into areas which are space limited. Enable to use space more effectively & make more space for product display.

Specifications

Native Display Resolution 1920 X 502 (FHD)

High Brightness 500 cd/m²

Contrast Ratio 1,400:1 (Typ.), N/A (DCR)

Super IPS 178° Viewing Angle viewing angle and life expectancy enhanced

Viewing Angle and Life Expectancy

RJ-45 LAN Control

Display Port, HDMI, RGB and DVI-D Connection

RS-232C Control

Convenient External Speaker-Out

Energy Star® 5.1 compliant

Bezel Width 21mm (top/bottom), 20mm (left/right)

USB Playback

USB Port

Temperature Sensor

Smart Energy Saving

PIP/PBP

3-Year Limited Warranty Parts/Labor/Backlight



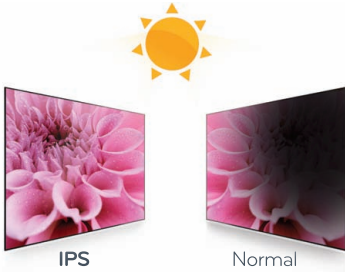
LG

Life's Good

LGsolutions.com

NO BLACKENING DEFECT

Display has a built-in temperature control that adjusts to light and heat eliminating dark or blackened areas.



If the outdoor temperature is 86°F the surface temperature of display is 185°F

TRUE WIDE VIEWING

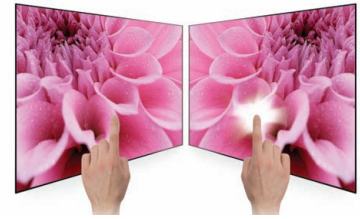
Color changes and distortion are eliminated from any viewing angle.



Color change average @ 60°
Gamma change average @ 60°

PANEL STABILITY

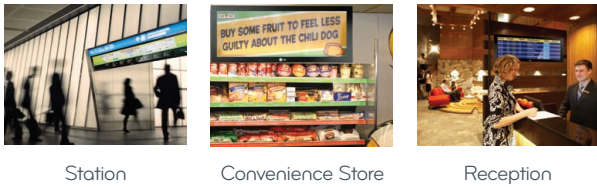
Minimized image distortion when external pressure is applied.



IPS Normal

Unique Application for Space Limitation

Allows to put the display into areas which are space limited. Enable to use space more effectively & make more space for product display.



Station Convenience Store Reception

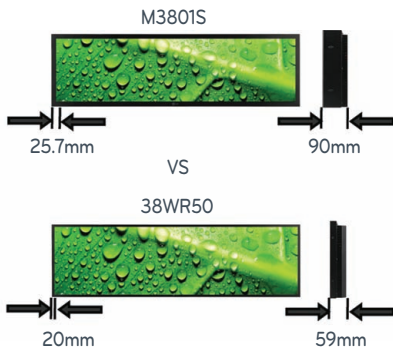
LED

High Picture Quality & Brightness

Clear and vivid picture quality with the deepest black. Consumes approximately 40% less energy the LCD models.

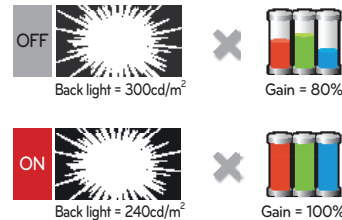


Slim & Narrow Bezel



Smart Energy Saving

Reduce energy consumption by approximately 30%



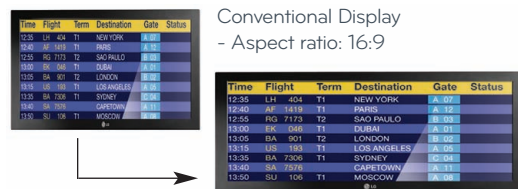
Easy & Fast Delivery of Content

USB multi-media playback



Wide Viewing Angle

Ensure that content created for conventional displays will be well suited for non-standard aspect ratio.



Auto Scaling

Conventional Display
- Aspect ratio: 16:9

Stretched Display
- Aspect ratio: 17:6 or 16:4



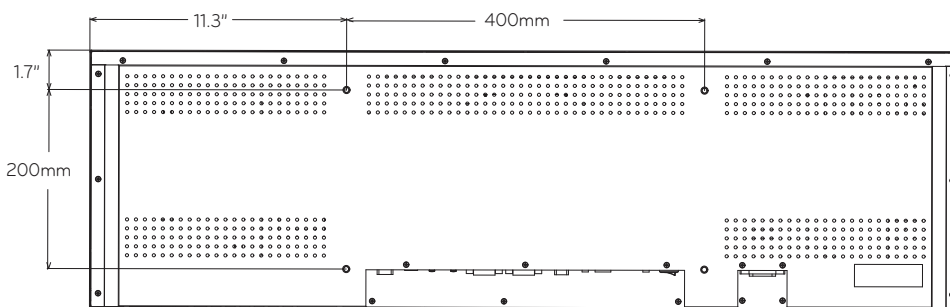
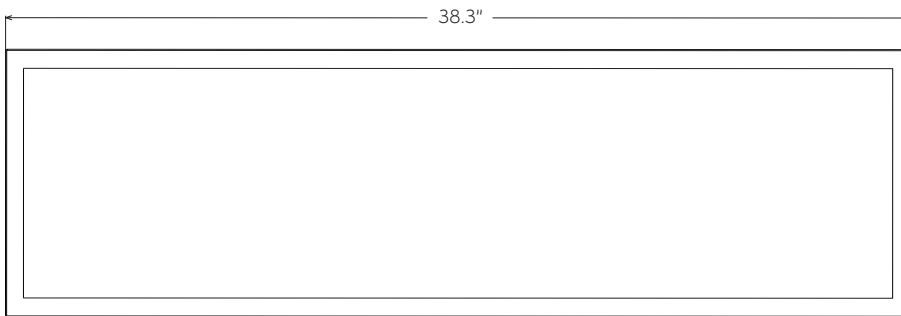
LIFE'S GOOD...

when it's green.

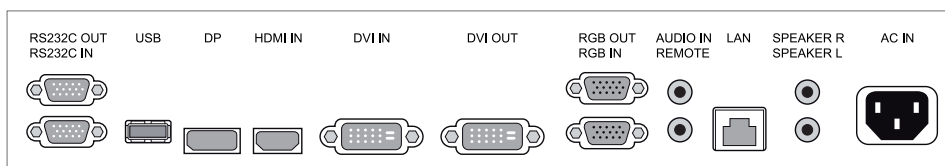
LG is committed to improving product development, manufacturing and usage to meet the demand for products with environmentally friendlier features. Our televisions have technologies to reduce power consumption and in return increase cost savings per room.

EcoSmart

- **Intelligent Sensor** - Continually monitors room light conditions to automatically optimize the picture quality for a more enjoyable viewing experience, which can help save energy.
- **Dynamic Power Savings** - Using built-in algorithms, TV will automatically reduce the power consumption based on incoming video, while maximizing picture performance.
- **Static Power Savings** - Picture brightness level can be set at the preferred power consumption level to reduce power and increase energy savings.
- **CEC Compliant** - Meets the Appliance Efficiency Regulations of the California Energy Commission.
- **RoHS Compliant** - Meets directive on restriction of hazardous substances.
- **Energy Star 5.1 Qualified** - Meets current reduction requirements of energy consumption.



Rear Jack Panel



IPS Edge LED

Full HD Capable Monitor

▶ **38WR50MS**

38" class (37.9" measured diagonally)



PANEL	Model	38WR50MS
	Panel Size	38" class (37.9" measured diagonally)
	Panel Technology	IPS
	Aspect Ratio	16 : 4
	Native Resolution	1920 x 502 (FHD)
	Brightness	500 cd/m ²
	Contrast Ratio (Typ.)	1,400:1
	Dynamic CR (DCR)	N/A
	Viewing Angle	178°/178°
	Response Time	6ms (G to G)
	Orientation	Landscape
INPUT (Rear)	Digital	DVI-D(1), HDMI(1), Display Port(1) with HDCP for all input
	Analog	RGB(1)
	Audio	PC Audio In(1)
	External Control	RS232C(1), RJ45(1), IR Receiver(1)
	USB	USB(1)
OUTPUT (Rear)	Digital	DVI-D(1)
	Analog	RGB(1)
	Audio	External speaker(1)
	External Control	RS232C(1)
AUDIO	Balance	Yes
	Audio Power	20W (10W x 2)
	Speaker on/off	Yes
	Clear Voice II	Yes
	Sound Mode	Standard, Music, Cinema, Sports, Game
CABINET	Color	Black
	Bezel Width	21mm (top/bottom), 20mm (left/right)
	Monitor Dimensions	38.3" x 11.3" x 2.3" (W x H x D)
	Monitor Weight	27.6 lbs.
	Carton Dimensions	42.2" x 17.9" x 7.1" (W x H x D)
	Packed Weight	32.4 lbs.
	VESA™ Standard Mount Interface	400mm x 200mm

SPECIAL FEATURES	Model	38WR50MS
	Temperature Sensor	
	Source Selection	RGB / DVI-D / HDMI / Display Port / USB
	Brightness/Contrast/Backlight	
	Position/Size	
	Auto Config/Phase	
	Time	Clock, On/off Time, Sleep Timer, Power on Delay, Auto off, Automatic standby
	Input Label	
	Auto Power/Source Memory	
	Key Lock	
	DPM Select	
	Energy Saving	Off / Minimum / Medium / Maximum / Screen Off
	Smart Energy Saving	
	Power Indicator On/Off	
	File Play with USB	
	PIP/PBP	
ENVIRONMENT CONDITIONS	Operation Temp.	0°C ~ 40°C
	Operation Humidity	10% ~ 80%
POWER	Power Supply	100-240V~, 50/60Hz
	Power Consumption	Normal (Typical) 90W
		Smart Energy Saving on 80W
		DPMS Off 1W (set only)
	Power Off 0.5W	
STANDARD CERTIFICATION	Safety	UL / cUL / CB
	EMC	FCC / CE / C-tick
	Erp/Energy Star	Yes / Yes (EPA 5.1)
MEDIA PLAYER	External Media player Attachable	
SOFTWARE	SuperSign Elite-W / Elite-W lite w/Editing, Scheduling, Distribution & Play, Control	
WARRANTY	3-Year Limited Warranty (Parts/Labor/Backlight)	
UPC	7 19192 19179 2	
ACCESSORIES	Remote Controller, Power Cable, RGB Cable, Manual, ESG, IR Receiver	



LG Electronics U.S.A., Inc.
HE B2B Division
2000 Millbrook Drive
Lincolnshire, IL 60069

Customer Service: 888.865.3026
www.LGsolutions.com/support

Contact your LG Regional Sales Representative:
Channel: 800.897.8871
Hospitality: 800.228.1236
E-mail: info@LGsolutions.com

SPEC_38WR50MS_011306_PR



All screen images are simulated. Dimensions and weights are approximate. Design, specifications, and features subject to change without notice.

© Copyright 2013 LG Electronics USA, Inc. All Rights Reserved. "LG Life's Good" is a registered trademark of LG Corp.

ENERGY STAR is a registered trademark of the U.S. Environmental Protection Agency. In Plane Switching is a trademark of LG Philips LCD Ltd. VESA is a trademark of Video Electronics Standards Association. HDMI, the HDMI logo and High-Definition Multimedia Interface are trademarks or registered trademarks of HDMI Licensing LLC.

All other product and brand names are trademarks or registered trademarks of their respective companies.

Printed in the USA. January 2013