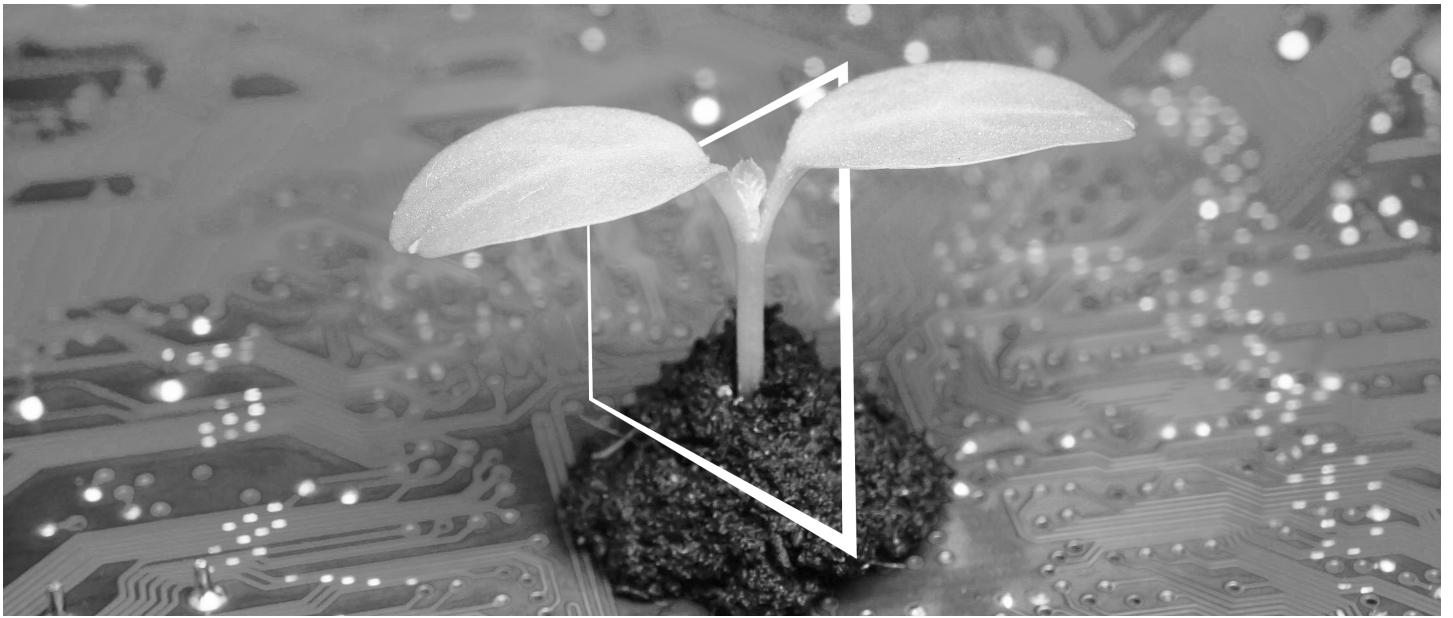


KONICA MINOLTA

USER'S GUIDE
ADDITIONAL INFORMATION





DIGITAL RESOURCES HUB

SUSTAINABLE AND ALWAYS UP-TO-DATE!

Our pool of digital resources allows you to make your operations more sustainable and efficient. Access all latest materials and training resources around your system whilst contributing to a more sustainable environment. No need for extensive search and without having to print anything on paper.

Latest information at the click of a button Download Center

Download printer drivers, utilities, user guides etc. all from one place — with the assurance that it is the most up-to-date information.

Visit: <https://konicaminolta.eu/download-centre>



Step-by-step guidance for your system iTraining

iTraining provides an online product introduction that uses clear video sequences with detailed explanations of all the important functions of your system. This step-by-step guidance makes getting to know your system easy.

Visit: <https://itraining.konicaminolta.eu>





Table of contents

1 Various Additional Functions

| | | |
|-------------|--|-------------|
| | About this guide..... | 1-3 |
| 1.1 | Installing the Printer Driver or Fax Driver (Windows) | 1-3 |
| 1.2 | Customizing the Setting Item Layout in Copy, Scan, and Fax..... | 1-5 |
| 1.3 | Registering an Option Setting for Copy, Scan, or Fax in Favorite..... | 1-6 |
| | About Favorite Setting | 1-6 |
| | Registering a Favorite Setting..... | 1-6 |
| | Recalling a Favorite Setting | 1-6 |
| | Changing the Contents of a Favorite Setting..... | 1-7 |
| 1.4 | Scanning the Card | 1-8 |
| | About Scanning the ID Card | 1-8 |
| | How to Scan | 1-8 |
| | Registering the Original Size..... | 1-10 |
| 1.5 | Sending the Download URL to Your Address (Scan to URL)..... | 1-11 |
| | Scan to URL..... | 1-11 |
| | Operation flow: When selecting [Scan to URL] on the home screen..... | 1-11 |
| | Operation flow: When selecting [URL] from the address book on the E-mail sending screen..... | 1-11 |
| 1.6 | Sending to Your Computer (Scan to Home) | 1-12 |
| | About [Scan to Home]..... | 1-12 |
| | Operation flow..... | 1-12 |
| 1.7 | Confirming the GPL Agreement on the Control Panel | 1-12 |
| 1.8 | About TWAIN Scan..... | 1-12 |
| 1.9 | About Preview Display in Basic Style..... | 1-12 |
| 1.10 | About the Number of Documents or Pages that can be Stored in the User Boxes | 1-13 |
| 1.11 | About Function Search..... | 1-13 |
| 1.12 | About i-Option LK-102..... | 1-13 |
| 1.13 | About Changing the Default Copy, Scan, and Fax Option Settings | 1-13 |
| 1.14 | Additional Troubleshooting Information | 1-14 |
| | Problems in IP Address Fax..... | 1-14 |
| | Problems in Automatic Paper Type Detection..... | 1-14 |
| 1.15 | Correction of Explanation to Specify a Destination from Transmission Log..... | 1-14 |
| 1.16 | Correction of Explanation about In-memory Proxy Reception Function | 1-15 |

2 Additional Functions for Administrator

| | | |
|-------------|---|------------|
| 2.1 | Setting the Display Screen Layout for OpenAPI/IWS Application..... | 2-3 |
| 2.2 | Collectively Setting Weekly Timer to All Days of the Week | 2-3 |
| 2.3 | Prohibiting a Change of Favorite Copy Setting..... | 2-3 |
| 2.4 | Prohibiting a Change of Favorite Scan/Fax Setting..... | 2-3 |
| 2.5 | Prohibiting Use of Favorite Setting | 2-4 |
| 2.6 | Specifying that the Certificate Encryption Key is Used for Server Authentication | 2-4 |
| 2.7 | Switching the Fax Setting Values to the Setting Values Suitable for the IP Line..... | 2-4 |
| 2.8 | Setting the Range of the SSL Version for SSL Communication..... | 2-4 |
| 2.9 | Enabling the Password Rules | 2-5 |
| 2.10 | Assigning Administrator Privileges when Registering User Information | 2-6 |
| 2.11 | Configuring Job Log Settings..... | 2-7 |
| | Creating a Job Log in syslog Format..... | 2-7 |
| | Downloading a Job Log in syslog Format | 2-7 |
| | Deleting a Job Log in syslog Format | 2-7 |
| | Selecting the Message Format of the Job Log in syslog Format | 2-7 |
| | Selecting a Protocol Used When Automatically Sending Job Logs to the Server | 2-7 |
| | When the Storage Capacity of This Machine is Less than 256 GB: | 2-8 |

| | | |
|------|--|------|
| 2.12 | Restarting the Machine | 2-8 |
| 2.13 | Changing the Print Settings when Direct-printing a PDF File | 2-8 |
| 2.14 | Shortcut Keys Related to the Registered Applications | 2-9 |
| 2.15 | About Wireless LAN Communication Authentication/Encryption Algorithm | 2-9 |
| 2.16 | About POP Authentication Password | 2-9 |
| 2.17 | Notifying when a Virus is Detected | 2-9 |
| 2.18 | Using a Relay Server when Using a Remote Service | 2-10 |
| 2.19 | About the Explanation of [Memory allocation settings] | 2-10 |
| | [Memory allocation settings] | 2-10 |
| 2.20 | Supplement to [Print] Function Permission | 2-10 |

3 Additional Functions of i-Option LK-114 (Serverless Pull Printing)

| | | |
|-------|---|------|
| 3.1 | Change Points of i-Option LK-114 (Serverless Pull Printing)..... | 3-3 |
| 3.2 | LK-114_ManagerPort..... | 3-3 |
| 3.2.1 | About LK-114_ManagerPort | 3-3 |
| 3.2.2 | System environment requirements | 3-3 |
| 3.2.3 | Configuring LK-114_ManagerPort settings | 3-4 |
| | Setting the printer port..... | 3-4 |
| | Setting the destination information..... | 3-5 |
| | Adding the printer port..... | 3-6 |
| 3.3 | LK-114_SetupTool..... | 3-7 |
| 3.3.1 | About LK-114_SetupTool | 3-7 |
| 3.3.2 | System environment requirements | 3-7 |
| 3.3.3 | Screen layout of LK-114_SetupTool..... | 3-7 |
| 3.3.4 | Setting the Serverless Pull Printing Group Configuration | 3-9 |
| | Searching for devices on the network for setting | 3-9 |
| | Acquiring group information from the topology machine for setting | 3-9 |
| | Loading the saved configuration file for setting..... | 3-10 |
| 3.3.5 | Creating a configuration file to load into LK-114_ManagerPort | 3-10 |



Various Additional Functions

1 Various Additional Functions

About this guide

This guide describes the newly added or changed functions of this machine.

The screens used in this manual differ depending on the product you are using.

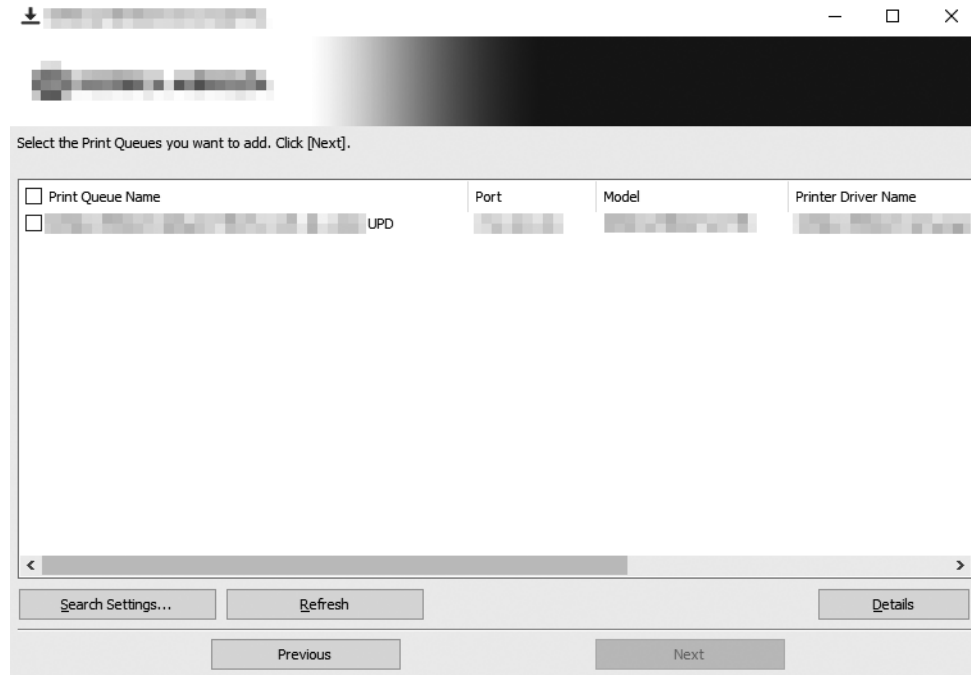
1.1 Installing the Printer Driver or Fax Driver (Windows)

The driver used in the Windows environment is changed to the **Universal Printer Driver** that can be used on various models. For details on the driver setting items, refer to the driver help.

This section describes how to install the driver on your computer using the installer stored on the included driver DVD.

- ✓ Administrator privileges are required to perform this task.
 - ✓ Before using a USB connection, connect this machine to the computer using a USB cable. If a wizard screen appears to add new hardware, click [Cancel].
- 1 Insert the driver DVD into the DVD drive of the computer.
 - 2 Select the driver to install from the printer installation menu.
 - Make sure that the installer starts, then go to Step 3.
 - If the installer does not start, open the driver folder on the DVD, double-click [UPDSetup.exe] (in the 32-bit environment) or [UPDSetup64.exe] (in the 64-bit environment), and proceed to step 3.
 - If the [User Account Control] window appears, click [Continue] or [Yes].
 - 3 Read the license agreement, then click [Agree].
 - 4 Click [Install(Network Search)] to detect the device on the network.
 - To manually configure the printer, click [Install(Manual Setting)].
 - If you have an old driver installed on your computer, you can update it by clicking [Standard Update] or [Custom Update].
 - If you want to uninstall the driver installed on your computer, click [Delete].

- 5 Select this machine from the list of detected printers.
- If this machine is not detected, restart it. If it is not detected after restarting, go back to step 4 and click [Install(Manual Setting)]. Click [Add to list] to manually configure the printer.
 - If multiple identical models are displayed, check the IP address. You can check the IP address of this machine in the screen that is displayed by tapping [Utility] - [Device Information].
 - To search for the device again, click [Refresh].
 - By clicking [Search Settings], you can specify the detailed search conditions to search for the device.
 - If there is a port corresponding to the IP address of the device, delete that port in advance.



- 6 If necessary, click [Details] and change the default print settings.
- [Print Queue Name] (printer name): Automatically set from the information of the device selected in the list.
 - [Port]: Set the port used for the printer.
 - [Model]: The model corresponding to the device selected in the list is automatically selected.
 - [Printer Driver Name]: The driver corresponding to the device selected in the list is automatically selected.
 - [Share Setting and Share Name]: If you want to share the printer, check [Share this print queue], and enter the share name.
 - [Admin Settings]: You can change the default print settings. By default, the driver that has 2-sided printing specified as the default is installed.
- 7 Click [Next].
- 8 Check the items to be installed, and click [Install].

1.2 Customizing the Setting Item Layout in Copy, Scan, and Fax

You can customize the layout of setting items in each mode (Copy, Quick Copy, Scan, Fax, etc.) of basic style to make it easier to use.

If the **MarketPlace** app is installed, you can change the sort order of setting items for each log-in user.

- ✓ If user authentication is enabled and the **MarketPlace** app is not installed, you need to log in as a user with administrator privileges to change the sort order of setting items.

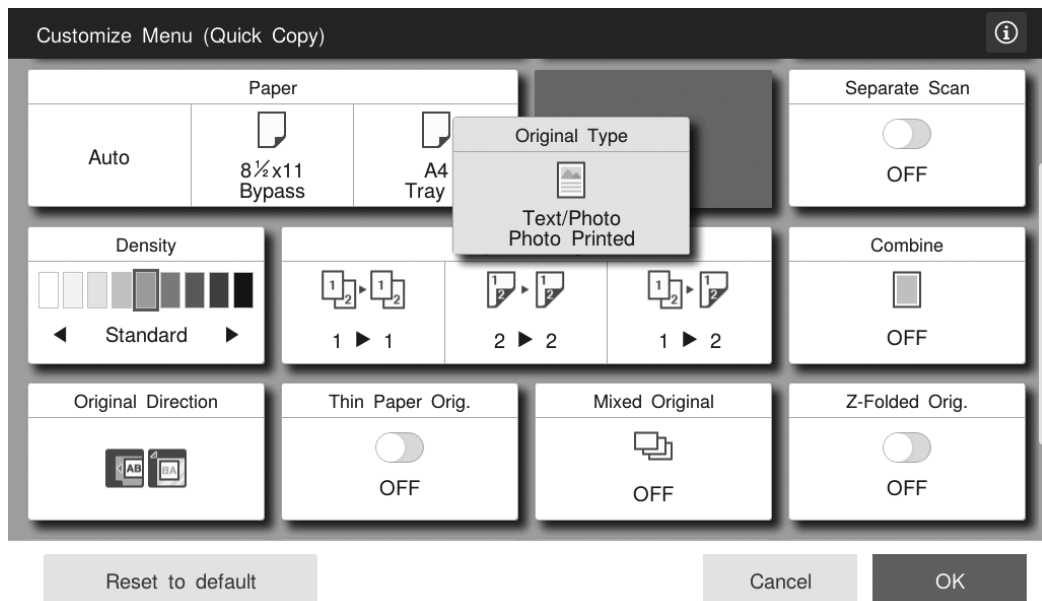
- 1 Tap the target function key on the home screen.
 - If you are logging in as an administrator, proceed to step 4.
 - If you are logging in as a user or you do not have user authentication, proceed to step 2.
- 2 Tap the menu icon on the top left of the screen, and select [Customize Menu] from the displayed menu.



- 3 Enter the administrator password, and tap [OK].

- 4 Change the setting item layout order.

- To move a setting item, hold down the desired item, and drag & drop it to the target position. When a gray silhouette is displayed at the target position, release hold-down.
- To return the layout order to the default, tap [Reset to default].



- 5 Tap [OK].

1.3 Registering an Option Setting for Copy, Scan, or Fax in Favorite

About Favorite Setting

You can register a combination of option settings used in each mode (Copy, Quick Copy, Scan, Fax, etc.) of basic style in Favorite. Registering the frequently used setting contents allows you to simply recall a setting.

An address can also be included in a favorite scan or fax setting.

Registering a Favorite Setting

- 1 Tap the target function key on the home screen.
- 2 Change the option setting value to the value you want to register in Favorite.
- 3 Tap the menu icon on the top left of the screen, and select [Register current settings in "My Settings"] from the displayed menu.



- 4 Set registration information.
 - Enter the favorite setting name in [Name].
 - To select a favorite setting icon, tap [>] of [Icon].
 - To fix a favorite setting to the top of the favorite list, set [Pin it] to ON.
- 5 Tap [New].




Recalling a Favorite Setting

- 1 Tap the target function key on the home screen.
- 2 Tap the menu icon on the top left of the screen, and select [Show "My Settings" list] from the displayed menu.
- 3 Select the favorite setting you want to recall, and tap [Recall].

The contents of the favorite setting are applied to Optional Settings.

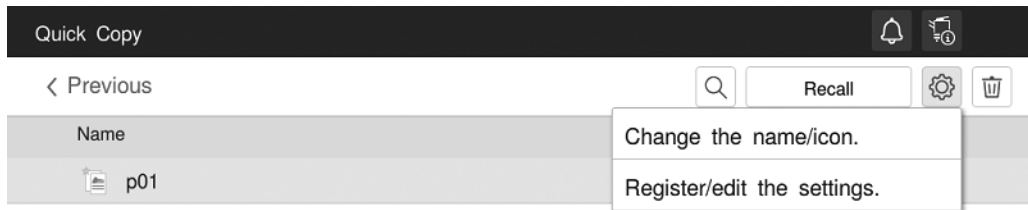


Tips

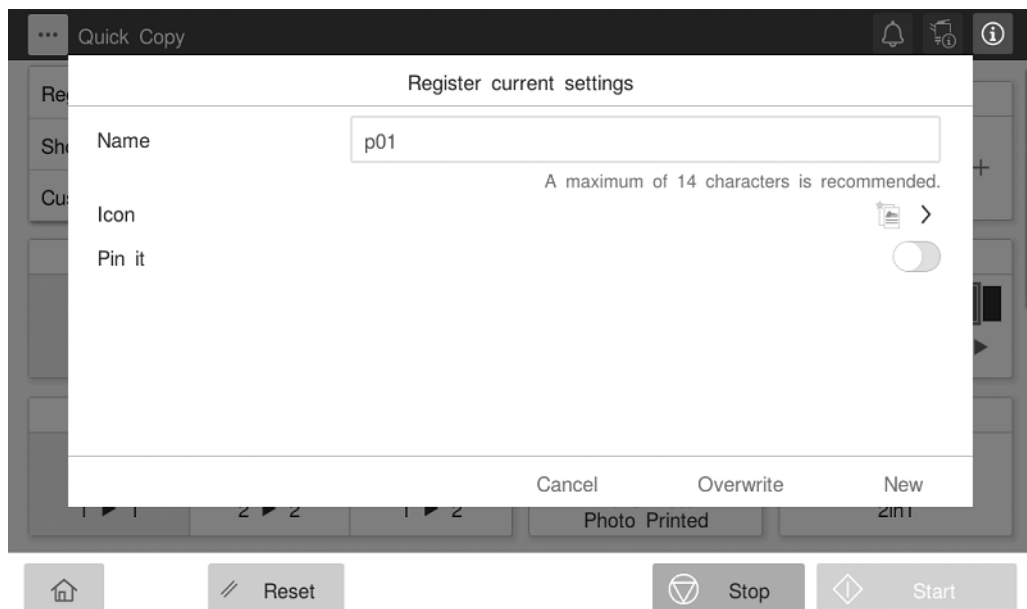
- To search for a favorite setting, tap .
- To change the favorite setting name or icon, select the desired favorite setting, and tap [Change the name/icon.] from .
- To delete a favorite setting, select the desired one, and tap .

Changing the Contents of a Favorite Setting

- 1 Select the desired favorite setting in the favorite list, and tap [Register/edit the settings.] from .



- 2 Change the option setting value.
- 3 Tap the menu icon on the top left of the screen, and select [Register/edit in "My Settings"] from the displayed menu.
- 4 To overwrite the setting, tap [Overwrite].
 - To save the setting with a different name, enter the name in [Name], and tap [New].



1.4 Scanning the Card

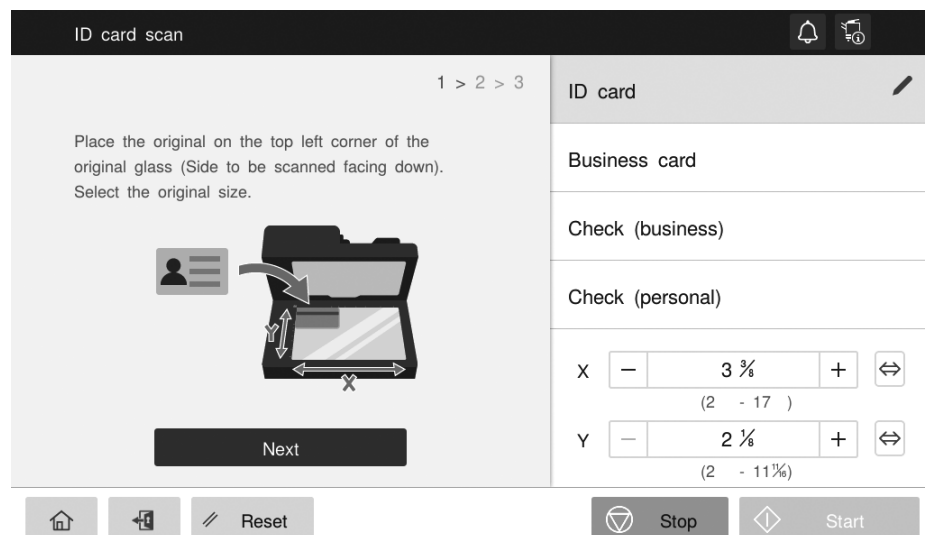
About Scanning the ID Card

You can scan and send small-sized originals such as insurance cards and driver's licenses with a simple operation.

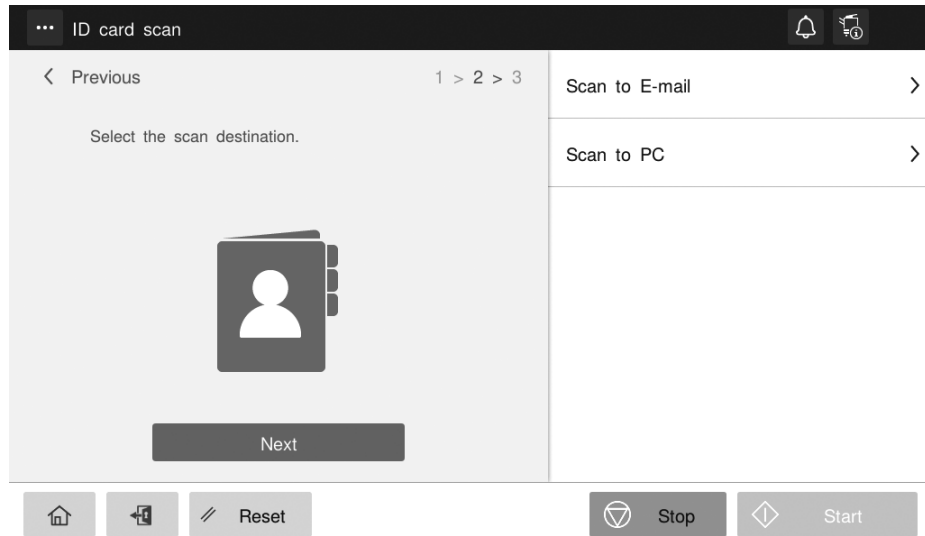
Any size of various cards can be registered as the original size. Also, you can select the aggregation method according to your purpose, such as combining the scanned original data into one file, or dividing it into individual files.

How to Scan

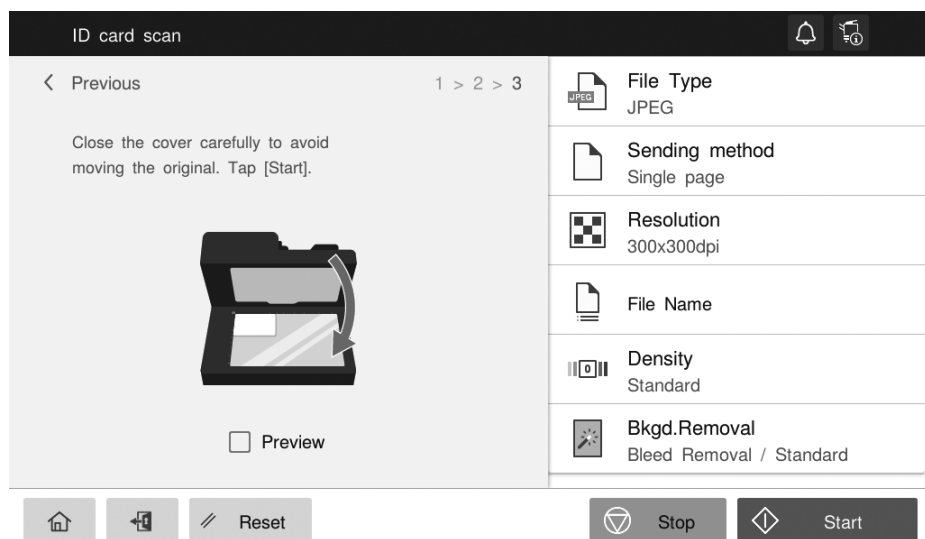
- 1 Tap [ID card scan] on the home screen.
- 2 Place a card on the **Original Glass**.
 - Place the original in the left corner of the **Original Glass** with the side to be scanned facing down.
- 3 Select the original size, and tap [Next].
 - Select the registered original size or enter the size manually.
 - You can change the registered contents of the original size. For details, refer to page 1-10.



- 4 Select a destination, and tap [Next].
- To send to an E-mail destination, tap [Scan to E-mail].
 - To send to an FTP, SMB, or WebDAV destination, tap [Scan to PC].




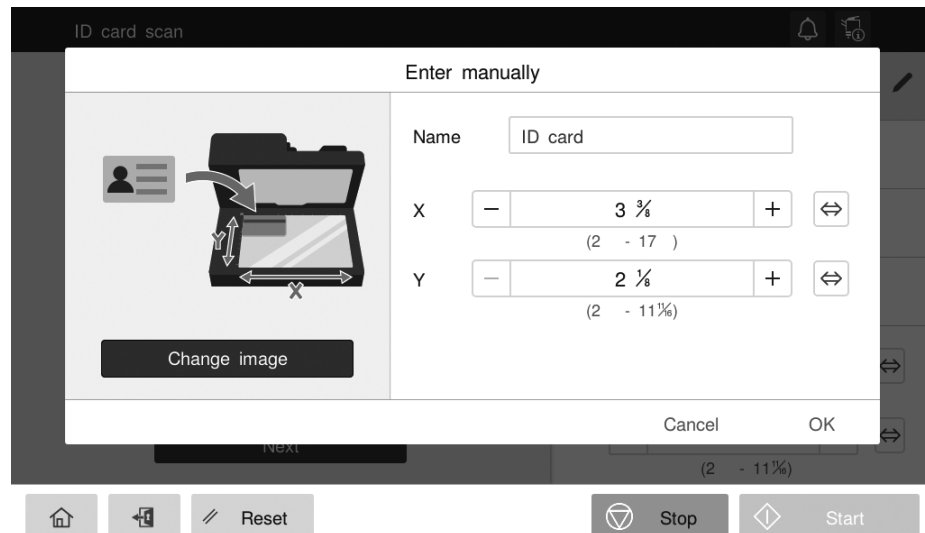
- 5 Specify transmission options as needed.
- In [Sending method], you can specify how to organize the scanned original data into a file.
 - [Single page]: Scans the original once and sends the file.
 - [Separate files]: Scans multiple originals in succession and sends each original as a single file.
 - [All in one file]: Scans multiple originals in succession and collects them into one file for sending.
 - To check the finish, select the [Preview] check box.



- 6 Close the original cover, and tap the Start key.
- If you have selected [Separate files] or [All in one file] in [Sending method] of the sending option, place the next original on the original glass, and tap [Continue scanning]. To start sending, tap the Start key.

Registering the Original Size

- 1 Tap the  icon of the original size.
- 2 Select the original size setting method.
 - If you want to select the original size from the default size, select [Preset size].
 - If you want to set the original size manually, select [Enter manually].
- 3 If you select [Enter manually], specify the image, registered name, and size, and tap [OK].



1.5 Sending the Download URL to Your Address (Scan to URL)

Scan to URL

The Scan to URL function, which was previously available in the classic style, can now be used in the basic style.

Scan to URL is a function that sends the URL to download the original data scanned on this machine, to your E-mail address. The scanned original data is saved in the box of this machine for a preset period without being attached to an E-mail, so data can be acquired without being limited by the transmission capacity of the mail server.

If user authentication is installed on this machine, you can perform operation using the [Scan to URL] key on the home screen or the [URL] key displayed in the registered destination on the [Scan to E-mail] screen.

Tips

- If Active Directory is used as an authentication server, register the user's E-mail address in Active Directory.
- To use the Scan to URL function, the setting of this machine is required. For details, refer to the User's Guide.

Operation flow: When selecting [Scan to URL] on the home screen

- 1 Load the original.
- 2 Enter user information, and log in to this machine.
- 3 Tap [Scan to URL] on the home screen to start transmission.
 - To send after changing the option settings, tap the menu icon at the top of [Scan to URL] and proceed to step 4.



- 4 Change the transmission option settings.
- 5 Use the Start key to start transmission.

Operation flow: When selecting [URL] from the address book on the E-mail sending screen

- 1 Load the original.
- 2 Enter user information, and log in to this machine.
- 3 Tap [Scan to E-mail] on the home screen.
- 4 Select [URL].
- 5 Specify transmission options as needed.
- 6 Use the Start key to start transmission.

1.6 Sending to Your Computer (Scan to Home)

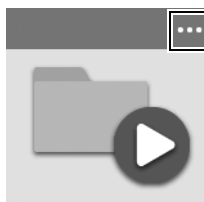
About [Scan to Home]

If you have installed user authentication using Active Directory on this machine and the user's Home folder is registered in Active Directory, the [Scan to Home] key is displayed on the home screen when you log in to this machine.

By selecting this key, you can perform SMB transmission using your Home folder as the destination. You can use the Scan to Home function more easily than the conventional method of operating from [Scan to PC].

Operation flow

- 1 Load the original.
- 2 Enter user information, and log in to this machine.
- 3 Tap [Scan to Home] on the home screen to start transmission.
 - To send after changing the option settings, tap the menu icon at the top of [Scan to Home] and proceed to step 4.



- 4 Change the transmission option settings.
- 5 Use the Start key to start transmission.

1.7 Confirming the GPL Agreement on the Control Panel

Display the GPL agreement on the **Control Panel** of this machine.


To display the GPL agreement, select [Information] - [GPL Regulations] in user mode of **Web Connection** (or in [Utility] - [Utility] of this machine).

1.8 About TWAIN Scan

Even when the machine has less than 256 GB of storage, you can use TWAIN Scan if you are ready to use it.

1.9 About Preview Display in Basic Style

You can use the preview display on the screen displayed by tapping [ID & Print] on the home screen.

- If the document list is displayed in thumbnail view, you can check the preview image of the file by tapping  displayed on the right of each thumbnail.
- If the document list is displayed in list view, you can select the file and then tap [preview] in the area where the thumbnail is displayed; you can check the preview image of the file.

1.10 About the Number of Documents or Pages that can be Stored in the User Boxes

When the storage capacity of this machine is 256 GB or more, a document of 10,000 pages in total can be saved in the User Box and System Box; however, the maximum number of pages that can be handled per job is 3,000. A job that contains more than this number of pages will be discarded, and the document will not be saved in the box. Be sure to note the number of pages per job.

1.11 About Function Search

In the function search of [Utility] and **Web Connection**, the setting item name is also included in the search target. In addition to the menu name and screen name that are the conventional search targets, you can also search by the setting item name in the screen, which makes it easier to find the desired setting screen.

1.12 About i-Option LK-102

The PDF processing function that required the purchase of **i-Option LK-102** can be used as standard without purchasing **i-Option LK-102**. As a result, **i-Option LK-110** does not include the function license of **i-Option LK-102**; it only includes the function license of **i-Option LK-105**.



Tips

For information about whether the PDF processing function is provided in your model, refer to the User's Guide.

1.13 About Changing the Default Copy, Scan, and Fax Option Settings

If you have the **MarketPlace** app installed, you can configure the default copy, scan, and fax option settings of basic style for each log-in user.

To change the default copy, scan, and fax option settings, select [Set the current setting value to Default value] from the menu icon at the top left of the screen for each mode.

1.14 Additional Troubleshooting Information

Problems in IP Address Fax

| Description of problem | Check points | Remedy |
|--|---|---|
| Even if you set [Print Paper Selection] to [Fixed Size] and specify the paper size in [Print Paper Size] when receiving an IP address fax, the fax is not printed in the specified size. | When specifying the destination of the IP address fax on the sending side, is [Machine Type of Destination] set to [Color]? | When specifying the destination of the IP address fax on the sending side, request the recipient to set [Machine Type of Destination] to [Monochrome], regardless of whether the receiving device is a color machine or a monochrome machine. |
| Even if you set [Print Separate Fax Pages] to ON when receiving an IP address fax, the page is not split and only the first page is printed. | When specifying the destination of the IP address fax on the sending side, is [Machine Type of Destination] set to [Color]? | When specifying the destination of the IP address fax on the sending side, request the recipient to set [Machine Type of Destination] to [Monochrome], regardless of whether the receiving device is a color machine or a monochrome machine. |

Problems in Automatic Paper Type Detection

| Description of problem | Remedy |
|--|---|
| A message is displayed stating that the paper type cannot be detected automatically. | Open and close the Right Door or turn the Main Power Switch off and on. If the message remains displayed, contact your service representative. |

1.15 Correction of Explanation to Specify a Destination from Transmission Log

When specifying a destination with the sending function such as scan or fax, you can tap the History tab to specify the destination from the five logs sent immediately before. There was an error in the explanation about deleting the history information when the main power was turned off and on. We apologize for the inconvenience and make the following corrections.

| Incorrect (description in the current situation) | Correct |
|--|---|
| If a registered destination or a User Box is edited or if the Main Power Switch is turned off or on, the log information is deleted. | If you are using the basic style, the history information is not deleted even if you turn the main power off and on. If you are using the classic style, the history information is deleted by turning the main power off and on. |

1.16 Correction of Explanation about In-memory Proxy Reception Function

There was an error in the description of the In-memory Proxy Reception function of network fax (Internet fax, IP address fax, or IP fax (SIP)). We apologize for the inconvenience and make the following corrections.

| Incorrect (description in the current situation) | Correct |
|--|---|
| The following receiving functions are available in Internet Fax. <ul style="list-style-type: none"> • Saving/Forwarding a Fax Which Cannot Be Printed (In-memory Proxy Reception) | The In-memory Proxy Reception function is not available for Internet fax. |
| The following receiving functions are available in IP Address Fax. <ul style="list-style-type: none"> • Saving/Forwarding a Fax Which Cannot Be Printed (In-memory Proxy Reception) | The In-memory Proxy Reception function is not available for IP address fax. |
| The following receiving functions are available in IP fax (SIP). <ul style="list-style-type: none"> • Saving/Forwarding a Fax Which Cannot Be Printed (In-memory Proxy Reception) | The In-memory Proxy Reception function is not available for IP fax (SIP). |



Additional Functions for Administrator

2 Additional Functions for Administrator

2.1 Setting the Display Screen Layout for OpenAPI/IWS Application

Set the display screen layout for the OpenAPI application and IWS application.

Select [System Settings] - [OpenAPI and IWS application display setting] in administrator mode of **Web Connection** (or in [Utility] - [Administrator] of this machine), and configure the following settings.

| Setting | Description |
|---|---|
| [OpenAPI and IWS application display setting] | Select whether to display a side menu (default: [Hide side menu]). To widen the application display area, hide the side menu. |

2.2 Collectively Setting Weekly Timer to All Days of the Week

You can collectively set the same work time to all days of the week using the weekly timer function that automatically switches the power save mode and normal mode.

Select [Maintenance] - [Timer Setting] - [Weekly Timer Settings] in administrator mode of **Web Connection** (or in [Utility] - [Administrator] of this machine), and configure the following settings.

| Setting | Description |
|---------------------|--|
| [Work Time Setting] | Specify the time to switch to the power save mode ([OFF Time]) and the time to return to the normal mode ([ON Time]) for each day of the week. <ul style="list-style-type: none"> [Batch Settings]: Collectively sets the same time to all days of the week. Select any one day of the week, enter [ON Time] and [OFF Time], and tap [Batch Settings]. If multiple days of the week are selected, Set All is not available. |

2.3 Prohibiting a Change of Favorite Copy Setting

Prohibit editing or deletion of the registered favorite copy setting.

Select [Security] - [Lock "My Settings" item (Copy)] in administrator mode of **Web Connection** (or in [Utility] - [Administrator] of this machine), and configure the following settings.

| Setting | Description |
|----------------------------------|--|
| [Lock "My Settings" item (Copy)] | Select a favorite setting to prohibit any changes from being made. |

2.4 Prohibiting a Change of Favorite Scan/Fax Setting

Prohibit registration, editing, or deletion of a favorite scan setting or favorite fax setting.

Select [Security] - [Restrict User Access] in administrator mode of **Web Connection** (or in [Utility] - [Administrator] of this machine), and configure the following settings.

| Setting | Description |
|--------------------------------------|--|
| [Registering and Changing Addresses] | Select whether to allow the user to register or change an address, a favorite scan setting, or favorite fax setting in basic style, and also a scan/fax program in classic style (default: [Allow]). |

2.5 Prohibiting Use of Favorite Setting

You can set whether to prohibit the user from registering or recalling a favorite setting.

Select [Security] - [Restrict User Access] in administrator mode of **Web Connection** (or in [Utility] - [Administrator] of this machine), and configure the following settings.

| Setting | Description |
|------------------------------|--|
| [Using the Program Function] | Select whether to allow the user to use a favorite setting in basic style and the copy program or the scan/fax program in classic style (default: [Enable]). |

2.6 Specifying that the Certificate Encryption Key is Used for Server Authentication

Set whether to include the fact that the encryption key of the certificate of this machine to be created or issued is used for server authentication, in the extended information of the certificate.

Select [Security] - [PKI Settings] - [Device Certificate Setting] - [New Registration] - [Create and install a self-signed Certificate.] in administrator mode of **Web Connection**, or select [Request a Certificate] - [Extended Key Usage (EKU)], and configure the following settings.

| Setting | Description |
|---|---|
| [Specify server authentication (id-kpserverAuth OID)] | When specifying that the encryption key of the certificate of this machine is used for server authentication, set this item to ON (default: OFF). |

2.7 Switching the Fax Setting Values to the Setting Values Suitable for the IP Line

If the IP line is used in the local machine or the remote machine, switch the setting values for fax sending/receiving to those suitable for the IP line to improve the communication quality.

Select [Fax Settings] - [Function Setting] - [Recommended settings for IP line] in administrator mode of **Web Connection** (or in [Utility] - [Administrator] of this machine), and configure the following settings. When multiple lines are used, you can configure settings for each line.

| Setting | Description |
|---------|---|
| [Line1] | When switching the setting values for fax sending/receiving to those suitable for the IP line, set this option to ON (default: OFF). Set this option to OFF to return to the setting values before setting to ON. |

2.8 Setting the Range of the SSL Version for SSL Communication

Set the range of the SSL version used when enabling SSL communication.

Select [Security] - [PKI Settings] - [Enable SSL Version] in administrator mode of **Web Connection** (or in [Utility] - [Administrator] of this machine), and configure the following settings.

| Setting | Description |
|---------------------------|--|
| [SSL/TLS Version Setting] | Select the target SSL version respectively from [Minimum] and [Maximum]. |
| [Encryption Strength] | Displays the SSL encryption strength (AES-256 only). |

2.9 Enabling the Password Rules

To enable the password rules, select the rule level.

Regardless of which rule level you select, rules are applied to the number of characters and character types that can be used in the password.

Select [Security] - [Security Details] - [Password Rules] in administrator mode of **Web Connection** (or in [Utility] - [Administrator] of this machine), and configure the following settings.

| Setting | Description |
|-------------------------------|--|
| [Password Rules] | <p>To enable the password rules, select the rule level (default: [Disable]). Setting to [Complexity 1] applies the following rules to the password to be specified in this machine.</p> <ul style="list-style-type: none"> • Minimum number of characters specified in [Set Minimum Password Length] • Passwords are case sensitive. • Only single-byte symbols are available. • A password consisting of a string of identical characters is prohibited. • The previous password is prohibited. <p>Setting to [Complexity 2] applies the following rules to the password to be specified in this machine.</p> <ul style="list-style-type: none"> • [Complexity 1] rules • Three types of uppercase alphabetical characters, lowercase alphabetical characters, numbers, and symbols must be mixed. • A password containing a word such as "Admin" or "Public" that can be easily guessed is prohibited. • A password containing a word registered in [Prohibited words] is prohibited. • The current password and the same password as the previous one are prohibited. |
| [Set Minimum Password Length] | If necessary, change the minimum number of password characters (default: [15] characters). |
| [Prohibited words] | Register words you want to prohibit use of when specifying a password. The banned words can be registered when [Complexity 2] is selected in [Password Rules]. |

Tips

- From [Utility] - [Administrator] on this machine, you can select [Security] - [Quick Security Setting] to configure this setting.
- When the password rules are enabled and the target password satisfies the password rules, the password strength is displayed, except in certain cases. Check the User's Guide to find out which passwords are subject to the password rules.

2.10 Assigning Administrator Privileges when Registering User Information

Select whether to assign administrator privileges to the user when registering user information in this machine.

To assign specific administrator privileges, select the privilege type as well.

Select [User Auth/Account Track] - [User Authentication Setting] - [User Registration] - [New Registration] - [Permission Setting] in administrator mode of **Web Connection** (or in [Utility] - [Administrator] of this machine), and configure the following settings.

| Setting | Description |
|-------------------------|--|
| [Administrative Rights] | <p>Select whether to assign administrator privileges to the user (default: [Do Not Allow]).</p> <ul style="list-style-type: none"> [Give all rights]: Assigns all the administrator privileges to the user. You can configure all the administrator settings in the same way as the administrator of this machine. [Give only specific rights]: Assigns the specific administrator privileges to the user. In addition, select at least one from the following privilege types. <ul style="list-style-type: none"> [Administration of security settings]: Set to ON when assigning privileges that can mainly set [Security] of the administrator settings (default: OFF). [Administration of network settings]: Set to ON (default: OFF) when assigning privileges that can mainly set [Network] of the administrator settings. [Administration of authentication and destination information]: Set to ON (default: OFF) when assigning privileges that can mainly set [User Auth/Account Track] of the administrator settings. |

Tips

The user with [Give all rights] specified can select whether to assign administrator privileges to other users if the user logs in to the machine in administrator mode. The user with [Give only specific rights] specified cannot assign administrator privileges to other users even if the user logs in to the machine in administrator mode.

2.11 Configuring Job Log Settings

Creating a Job Log in syslog Format

Configure the setting so that it is possible to download the syslog-format job logs saved on this machine.

This setting is available when [Enable Settings] is set to ON in [Security] - [Job Log Settings] - [Job Log Usage Set.] and [Auto (syslog)] is selected in [Transmission Method].

Select [Maintenance] - [Job Log] - [Create job log backup file] in administrator mode of **Web Connection**, then click [OK].



Tips

If any job logs have not been obtained, download them before creating new job log data. The job logs that have not been obtained are deleted when the new job log data is created.

Downloading a Job Log in syslog Format

Download the job log created in [Create job log backup file].

This setting is available when [Enable Settings] is set to ON in [Security] - [Job Log Settings] - [Job Log Usage Set.] and [Auto (syslog)] is selected in [Transmission Method].

Select [Maintenance] - [Job Log] - [Download job log backup file] in administrator mode of **Web Connection**, and select the location to download the file. Then, click [OK].

Deleting a Job Log in syslog Format

Delete syslog-format job logs saved on this machine.

This setting is available when [Enable Settings] is set to ON in [Security] - [Job Log Settings] - [Job Log Usage Set.] and [Auto (syslog)] is selected in [Transmission Method].

Select [Security] - [Job Log Settings] - [Erase job log backup] in administrator mode of **Web Connection** (or in [Utility] - [Administrator] of this machine), and select [OK].

Selecting the Message Format of the Job Log in syslog Format

When acquiring a job log in syslog format, select the message format of the log.

You can also select the format supported by each company's SIEM (Security Information and Event Management) products.

This setting is available when [Enable Settings] is set to ON in [Security] - [Job Log Settings] - [Job Log Usage Set.] and [Auto (syslog)] is selected in [Transmission Method].

Select [Security] - [Job Log Settings] - [syslog TX settings] in administrator mode of **Web Connection** (or in [Utility] - [Administrator] of this machine), and configure the following settings.

| Setting | Description |
|--------------|--|
| [Log format] | Select the log format (default: [Standard]). |

Selecting a Protocol Used When Automatically Sending Job Logs to the Server

First select the protocol used for automatic sending when configuring settings to automatically send job logs to the server.

Select [Security] - [Job Log Settings] - [Auto Distribution Setting] - [Basic Setting] in administrator mode of **Web Connection** (or in [Utility] - [Administrator] of this machine), and configure the following settings.

| Setting | Description |
|---------------|---|
| [TX Protocol] | Select the protocol used when automatically sending job logs to the server from [WebDAV] and [SMB] (default: [WebDAV]). |

When the Storage Capacity of This Machine is Less than 256 GB:

Job logs can be acquired even if the storage capacity of this machine is less than 256 GB. Unlike the case where the storage capacity is 256 GB or more, it is possible to use only the function that sends syslog-format job logs to the server.

- 1 Select [Security] - [Job Log Settings] - [Job Log Usage Set.] in administrator mode of **Web Connection** (or in [Utility] - [Administrator] of this machine), and configure the following settings.

| Setting | Description |
|-------------------|---|
| [Enable Settings] | When obtaining job logs, set this option to ON (default: OFF). |
| [Obtain Log Type] | Select whether to obtain job logs for each type. <ul style="list-style-type: none"> • [Accounting Log]: Enables you to obtain information relevant to paper consumption for each user or account (default: ON). • [Counting Log]: Enables you to obtain information about paper consumption and the reduction rate of paper used for printing (default: ON). • [Audit Log]: Enables you to obtain user operation or job history (default: ON). You can track unauthorized actions or the leakage of information. |

- 2 Select [Security] - [Job Log Settings] - [syslog TX settings] in administrator mode of **Web Connection** (or in [Utility] - [Administrator] of this machine), and configure the following settings.

| Setting | Description |
|---------------------------------|--|
| [Communication Protocol] | Select the communication protocol (default: [UDP]). |
| [Communication Server Settings] | Enter the IP address or host name of the destination server. |
| [Port No.] | If necessary, change the port number (default: [514]). |
| [Log format] | Select the log format (default: [Standard]). |

2.12 Restarting the Machine

Restart the machine remotely.

Select [Maintenance] - [System restart] in **Web Connection** administrator mode, and click [OK].



Tips

If there is a job running at the start of the restart, the restart will start after the job is completed.

2.13 Changing the Print Settings when Direct-printing a PDF File

Select whether to give priority to image quality or speed when direct-printing a PDF file.

Select [Printer Settings] - [Direct Print Settings] - [PDF print settings] in administrator mode of **Web Connection** (or in [Utility] - [Administrator] of this machine), and configure the following settings.

| Setting | Description |
|--------------------|---|
| [Prioritize Speed] | Set to ON (default: OFF) when giving priority to speed in order to direct-print a PDF file. Set to OFF when giving priority to image quality. |



Tips

This function is available when the product you are using is a color model.

2.14 Shortcut Keys Related to the Registered Applications

If you have registered the OpenAPI application on this machine, you can register an SVG format file on the shortcut key icon of the registered application or registered application group that can be placed on the home screen of basic style or the main menu of classic style. For details, contact your service representative.

2.15 About Wireless LAN Communication Authentication/Encryption Algorithm

WPA3 can be used in [Authentication/Encryption Algorithm] of [Network] - [Wireless Network Setting].

In addition, the setting item name of [Passphrase] has been changed to [Security Key].

The added algorithms are as follows:

| Setting | Added algorithm |
|--------------------------------|--|
| [Wireless LAN Adapter] | <ul style="list-style-type: none"> • WPA3-SAE • WPA3-EAP (*) • WPA3-EAP 192bit Security (*) * Available when [Network I/F Configuration] is set to [Wireless Only]. |
| [Main Device Wireless Setting] | <ul style="list-style-type: none"> • WPA3-SAE • WPA2-PSK/ WPA3-SAE |

WPA3 can be used in [Authentication/Encryption Algorithm] of [System Settings] - [System Connection Setting] - [Mobile Connection Settings] - [Wireless Connection Setting].

In addition, the setting item name of [Passphrase] has been changed to [Security Key].

The added algorithms are as follows:

- WPA3-SAE
- WPA3-EAP
- WPA3-EAP 192bit Security

2.16 About POP Authentication Password

You can specify up to 64 single-byte characters for the password used for POP authentication when receiving E-mail with this machine.

To set the password for POP authentication, select [Network] - [E-mail Setting] - [E-mail RX (POP)] - [Password] in administrator mode of **Web Connection** (or [Utility] - [Administrator] of this machine).

2.17 Notifying when a Virus is Detected

If **i-Option LK-116** (virus scan function) is installed, when a virus is detected by virus scan, you can notify that the virus has been detected by using E-mail or the TRAP function of SNMP.

Select [Maintenance] - [Status Notification Setting] in administrator mode of **Web Connection** (or [Utility] - [Administrator] of this machine), select the [Virus detected] check box as a warning to notify.

2.18 Using a Relay Server when Using a Remote Service

Set whether to use a relay server when using the remote service.

If you want to use a relay server, select [Security] - [Security Details] - [Remote Service setting] in administrator mode of **Web Connection** (or [Utility] - [Administrator] of this machine), and set [Use relay server] to ON.



Tips

For details on the remote service and relay server, contact your service representative.

2.19 About the Explanation of [Memory allocation settings]

A supplement will be added to the contents described in the User's Guide to explain the relevant information again. To set [Memory allocation settings], refer to the following explanation.

[Memory allocation settings]

To display: [Utility] - [Administrator] - [Network] - [IWS Settings] - [Memory allocation settings]

Select the execution environment of the IWS application to operate preferentially (default: [Python priority]).

Assign a more memory space to the selected IWS application execution environment.



Tips

- If you do not use the print data conversion function, background application function, or inter-application communication, you can allocate a lot of memory to the IWS application running in the Node.js environment by selecting [Node.js priority], so you can use IWS applications that run in many Node.js environments.
To confirm whether the target application runs in the Node.js environment, check whether Enable/Disable is displayed in [Status] of [Network] - [IWS Settings] - [Registered Application List]. If Enable/Disable is displayed, the target application is judged to be an application that runs in the Node.js environment.
- If [Print Data Conversion Setting], [Background Application Setting], or [Permit Access for Communication between Applications] is enabled, [Node.js priority] cannot be selected. Also, if [Node.js priority] is selected, [Print Data Conversion Setting], [Background Application Setting], and [Permit Access for Communication between Applications] cannot be enabled.
- When the print data conversion application or background application is installed, the setting value may be changed to [Python priority].

2.20 Supplement to [Print] Function Permission

If [Print] is restricted in [Function Permission] of [User Auth/Account Track] - [User Authentication Settings] - [User Registration] in administrator mode of **Web Connection** (or [Utility] - [Administrator] of this machine), printing from a USB flash drive is also restricted in addition to normal printing.



**Additional Functions of
i-Option LK-114 (Serverless
Pull Printing)**

3 Additional Functions of i-Option LK-114 (Serverless Pull Printing)

3.1 Change Points of i-Option LK-114 (Serverless Pull Printing)

The following applications, which are used for the serverless pull printing function, have been updated. This section describes how to use these applications, focusing on the contents added or changed in each application.

- **LK-114_ManagerPort**
- **LK-114_SetupTool**



Tips

- Confirm the User's Guide to see whether your product provides the serverless pull printing function.

3.2 LK-114_ManagerPort

3.2.1 About LK-114_ManagerPort

LK-114_ManagerPort is an application for sending print jobs from your computer to any storage machine in the serverless pull printing group.

In **LK-114_ManagerPort**, set the printer port used for serverless pull printing and the destination information for serverless pull printing.

3.2.2 System environment requirements

The following operating systems have been added as the supported OS.

- Windows Server 2012 Standard
- Windows Server 2012 R2 Standard
- Windows Server 2016 Standard
- Windows Server 2019 Standard

The required library has been changed to the following:

- Microsoft .NET Framework 4.5 or later only

3.2.3 Configuring LK-114_ManagerPort settings

Setting the printer port

Change the port used for the printer driver installed on your computer.

- ✓ For information on how to install **LK-114_ManagerPort**, refer to the User's Guide.
- ✓ A change of the port for the printer requires the computer's administrator privileges.

- 1 Display the **LK-114_ManagerPort** setting window.
 - Click [LK-114 Manager Port Settings] in the Windows application list.
 - For **LK-114_InstallTool**, display the **LK-114_ManagerPort** setting window from the **LK-114_InstallTool** installation target selection window.
- 2 Click [Change Printer Port Which Printer Uses].

- 3 Change the port of the target printer to [LK-114_ManagerPort], then click [OK].
When the printer port setting is complete, set the destination information.

Setting the destination information

Specify the serverless pull printing group you want to set as the print job sending destination from your computer.

You can also switch the destination serverless pull printing group depending on the location you want to perform serverless pull printing at by managing the destination information in the application.

- ✓ For information on how to install **LK-114_ManagerPort**, refer to the User's Guide.

- 1 Display the **LK-114_ManagerPort** setting window.
 - Click [LK-114 Manager Port Settings] in the Windows application list.
 - For **LK-114_InstallTool**, display the **LK-114_ManagerPort** setting window from the **LK-114_InstallTool** installation target selection window.
- 2 In [LK-114 Destination Domain Settings], specify the domain (IP address of the topology machine) to be set as the connection destination.
 - To directly specify the domain to be set as the connection destination, enter the IP address of the target topology machine, and click [Acquire Group Information]. Communicate with the specified topology machine and acquire the serverless pull printing group information in the domain.
 - When the destination information is managed in [Management of Destination Information], you can select the destination domain from the drop-down list.
 - When the destination information configuration file is distributed from the administrator, click [Update to Destination Information Distributed by Your Administrator] in [Management of Destination Information], and specify the configuration file to load.

- 3 In [Group of Destination], specify the serverless pull printing group to be set as the connection destination.
 - In [Port Name], specify the printer port you want to use.
 - [Destination Group] shows the serverless pull printing groups assigned to the printer port specified in [Port Name]. To change the assignment, specify the serverless pull printing group that is the connection destination.

- 4 In [Destination Information], specify the storage machine to store print jobs.
 - In [Storage Device Selection Method], select the method to select the storage machine used for normal storage or the alternative storage machine.
 - If [Auto] is selected, the storage machine that stores the print job is automatically selected depending on the operating status of the device set as the storage machine.
 - If [Manual] is selected, manually specify the storage machine used for normal storage and the alternative storage machine.
 - Click [Communication Settings] as needed, and configure SNMP settings or OpenAPI settings to communicate with the storage machine.
- 5 If you want to switch the connection destination depending on the location at which to execute the serverless pull printing, save the destination information in [Management of Destination Information].
 - To save the destination information, click [Save Destination Information]. When the managed destination information is changed, click [Save Destination Information] to overwrite the information.
 - Clicking [Manage Saved Destination Information] displays the destination information management page. You can change the destination name or delete destination information.
- 6 Click [Apply] or [OK] to save the setting.
 - Click [OK] to save the setting and exit the application.

Adding the printer port

You can add a port used for serverless pull printing in the [Ports] tab on the properties window of the printer driver. If multiple ports are created, you can divide the serverless pull printing group to be set as the connection destination for each port in the **LK-114_ManagerPort** setting window.

- ✓ The addition of ports requires the computer's administrator privileges.
- 1 Display [Devices and Printers] from [Control Panel].
 - 2 Open the Printer properties window.
 - Right-click the icon of the installed printer, and click [Printer properties].
 - 3 Click [Ports].
 - 4 Click [Add Port].
 - 5 Select [LK-114_ManagerPort Monitor], and click [New Port].
 - 6 Enter the port name, and click [OK].

3.3 LK-114_SetupTool

3.3.1 About LK-114_SetupTool

LK-114_SetupTool is an application for building a serverless pull printing environment.

You can also create a configuration file to load into LK-114_ManagerPort from the configuration information of the serverless pull printing group managed by LK-114_SetupTool.

Tips

Another application, LK-114_Editor for SetupTool, has been integrated into LK-114_SetupTool. This allows you to set the serverless pull printing with LK-114_SetupTool even when the device is offline. However, a change to an offline device must be applied manually when the device is online.

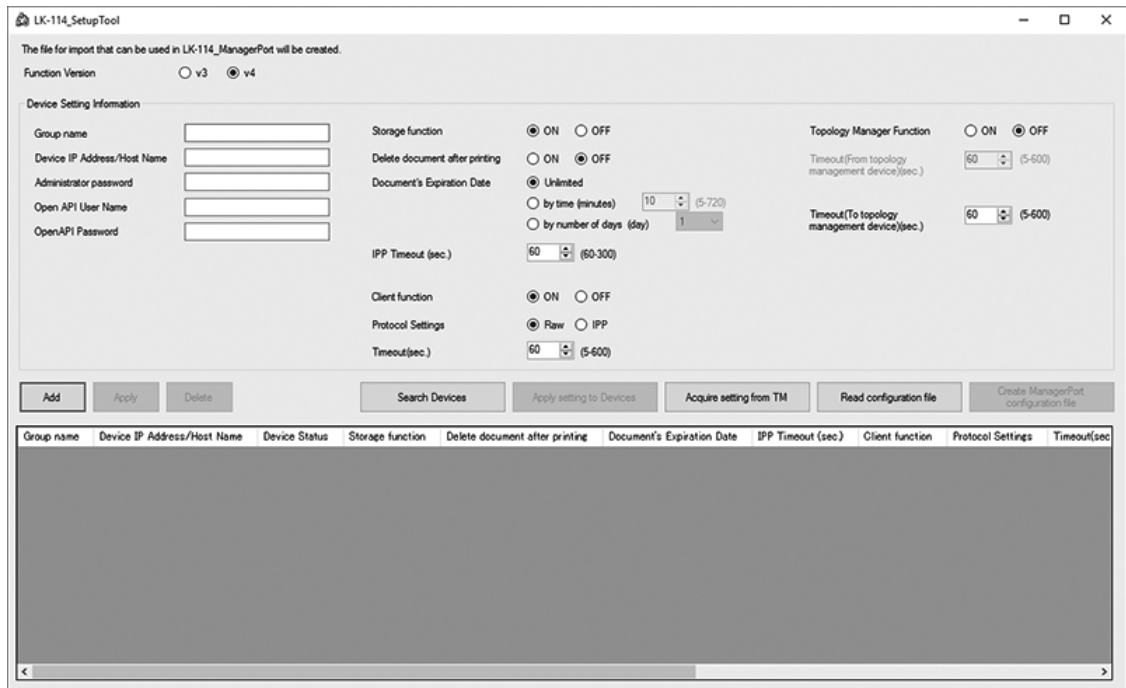
3.3.2 System environment requirements

The required library has been changed to the following:

- Microsoft .NET Framework 4.5 or later only

3.3.3 Screen layout of LK-114_SetupTool

The LK-114_SetupTool page is comprised of the following components.



| Item | Description |
|--------------------|--|
| [Function Version] | Select the function version of serverless pull printing you want to use. |

| Item | Description |
|---|--|
| [Device Setting Information] | <p>Set the device to be incorporated in the serverless pull printing environment.</p> <ul style="list-style-type: none"> • [Group name]: Enter the name of the serverless pull printing group to add the device to. • [Device IP Address/Host Name]: Enter the IP address or host name of the device. • [Administrator password]: Enter the administrator password of the device. • [OpenAPI User Name]: Enter the user name for OpenAPI authentication of the device. • [OpenAPI Password]: Enter the password for OpenAPI authentication of the device. • [Storage function]: Select whether to enable the storage function. • [Delete document after printing]: Specify whether to automatically delete the jobs spooled in the storage machine when they have been printed. • [Document's Expiration Date]: Specify the time until the jobs spooled in the storage machine are automatically deleted. • [IPP Timeout (sec.)]: Specify the timeout to print data using IPP. • [Client function]: Select whether to enable the client function. • [Protocol Settings]: Select a protocol to be used for serverless pull printing. • [Timeout(sec.)]: Specify the timeout to connect the MFP to the storage machine. • [Topology Manager Function]: Select whether to enable the topology manager function. • [Timeout(From topology management device)(sec.)]: Specify the timeout period for communication from the topology machine when using the device as the topology machine. • [Timeout(To topology management device)(sec.)]: Specify the timeout period for communication to the topology machine when using the device as a storage or client machine. |
| [Add] | Adds the device information displayed in [Device Setting Information] to the end of the list. |
| [Apply] | Applies the device information displayed in [Device Setting Information] to the device information selected in the list, and updates the list contents. |
| [Delete] | Deletes the device information selected in the list. |
| [Search Devices] | <p>Searches for the devices for which the serverless pull printing function on the network is enabled, and displays them in the list.</p> <p>A search is performed for the devices for which the serverless pull printing function version selected in [Function Version] is enabled.</p> |
| [Apply setting to Devices] | Applies the list contents to the device, and updates the device settings. |
| [Acquire setting from TM] | <p>Communicates with the specified topology machine to acquire the serverless pull printing group information in the domain, and displays it in the list.</p> <p>This function is available when [Function Version] is set to [v4].</p> |
| [Read configuration file] | Loads the configuration file saved when exiting LK-114_SetupTool . |
| [Create ManagerPort configuration file] | <p>Creates a configuration file to load to LK-114_ManagerPort.</p> <p>This function is available when [Function Version] is set to [v4].</p> |
| Device list | Displays the information of the devices used in the serverless pull printing environment. |

3.3.4 Setting the Serverless Pull Printing Group Configuration

Searching for devices on the network for setting

- 1 Start the **LK-114_SetupTool** execution file.
- 2 Click [Search Devices].

The devices for which the serverless pull printing function is enabled are displayed in the list.
- 3 Configure device information in [Device Setting Information] to update the list contents.
 - To change the device information in the list, select the desired device information, change the [Device Setting Information] setting, and click [Apply].
 - To add new device information to the list, set the information of the device to be added in [Device Setting Information], and click [Add].
 - To delete the device information from the list, select the desired device information, click [Delete].
- 4 To apply the list contents to the device, click [Apply setting to Devices].
- 5 When the setting is complete, exit **LK-114_SetupTool**.

If the list has been updated, the file save window is displayed when you exit **LK-114_SetupTool**, and you can save the configuration file. The configuration file can be loaded the next time **LK-114_SetupTool** is started.

Acquiring group information from the topology machine for setting

- 1 Start the **LK-114_SetupTool** execution file.
- 2 Click [Acquire setting from TM].
- 3 Enter the IP address of the topology machine to acquire the setting, and the user name and password for OpenAPI authentication. Then, click [Acquire].

The serverless pull printing group information in the domain is displayed in the list.
- 4 Configure device information in [Device Setting Information] to update the list contents.
 - To change the device information in the list, select the desired device information, change the [Device Setting Information] setting, and click [Apply].
 - To add new device information to the list, set the information of the device to be added in [Device Setting Information], and click [Add].
 - To delete the device information from the list, select the desired device information, click [Delete].
- 5 To apply the list contents to the device, click [Apply setting to Devices].
- 6 When the setting is complete, exit **LK-114_SetupTool**.

If the list has been updated, the file save window is displayed when you exit **LK-114_SetupTool**, and you can save the configuration file. The configuration file can be loaded the next time **LK-114_SetupTool** is started.

Loading the saved configuration file for setting

✓ You can load only the configuration file saved when exiting **LK-114_SetupTool**.

1 Start the **LK-114_SetupTool** execution file.

2 Click [Read configuration file].

3 Specify the configuration file to load.

The configuration information of the serverless pull printing group described in the configuration file is displayed in the list.

4 Configure device information in [Device Setting Information] to update the list contents.

→ To change the device information in the list, select the desired device information, change the [Device Setting Information] setting, and click [Apply].

→ To add new device information to the list, set the information of the device to be added in [Device Setting Information], and click [Add].

→ To delete the device information from the list, select the desired device information, click [Delete].

5 To apply the list contents to the device, click [Apply setting to Devices].

6 When the setting is complete, exit **LK-114_SetupTool**.

If the list has been updated, the file save window is displayed when you exit **LK-114_SetupTool**, and you can save the configuration file. The configuration file can be loaded the next time **LK-114_SetupTool** is started.

3.3.5 Creating a configuration file to load into **LK-114_ManagerPort**

Create a configuration file to load into **LK-114_ManagerPort** from the configuration information of the serverless pull printing group managed by **LK-114_SetupTool**.

1 Start the **LK-114_SetupTool** execution file.

2 Update the list contents to those you want to save as a configuration file.

3 Click [Create ManagerPort configuration file].

4 Specify the storage destination folder and file name, and save the configuration file in the specified file.



Tips

The created configuration file can be loaded from [Management of Destination Information] of **LK-114_ManagerPort**.